

dakota leather



DK10 - BLACK



DK11 - CHOCOLATE



DK12 - BRITISH TAN



DK13 - CARMEL



DK14 - BEIGE



DK15 - RED

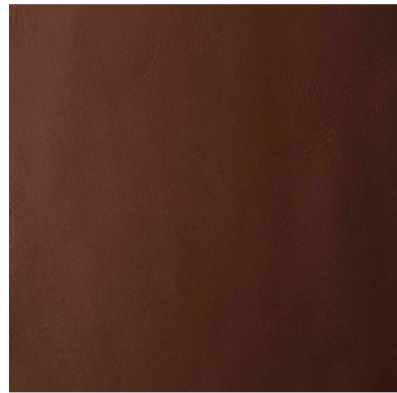


DK16 - WINE

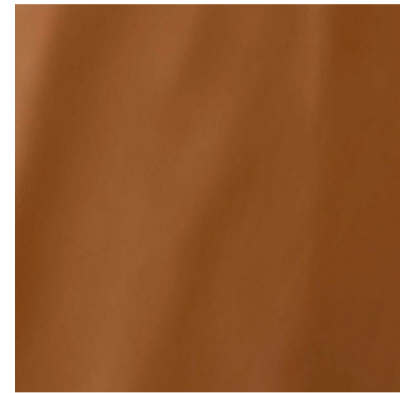


DK17 - NAVY

mellowtan leather swatches



ME12 - MAHOGANY



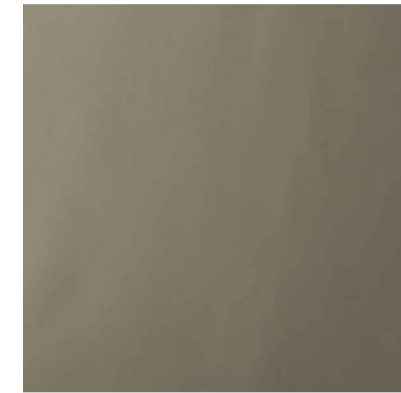
ME13 - ACORN



ME14 - BONE



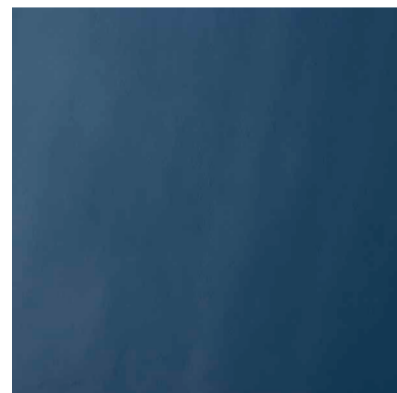
ME15 - TAUPE



ME16 - GRAY



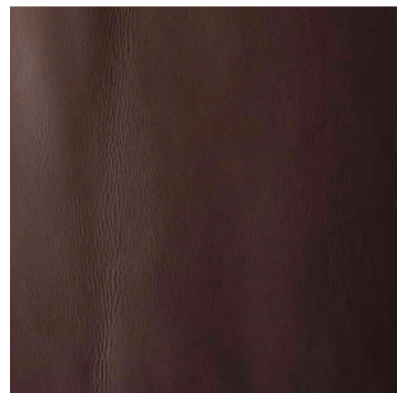
ME17 - BLUE



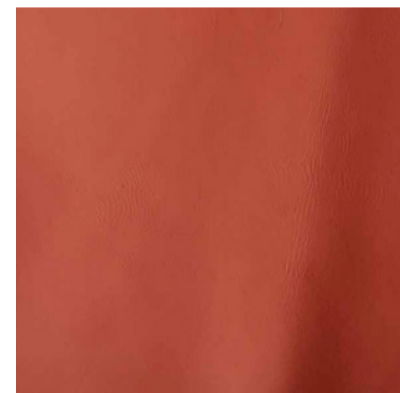
ME18 - ROYAL BLUE



ME26 - PURPLE



ME27 - BURGUNDY



ME28 - RED



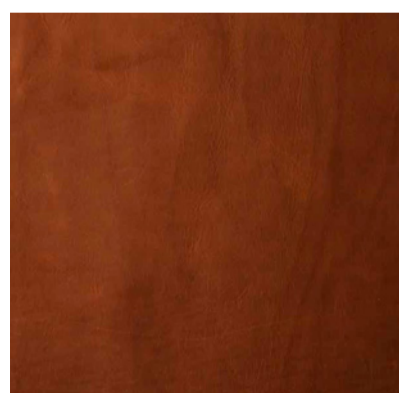
ME31 - PINK



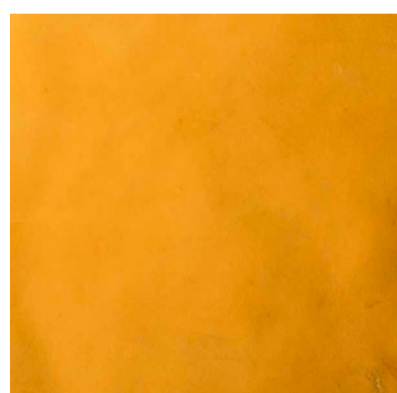
ME33 - WHITE



ME34 - BLACK
NAKED



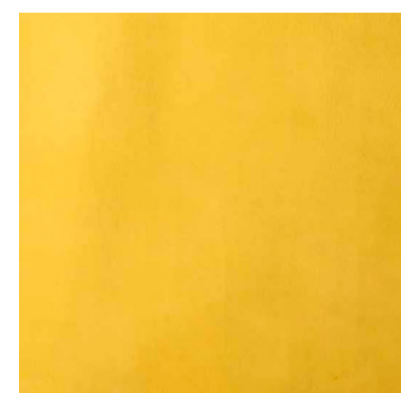
ME35 - RUST
NAKED



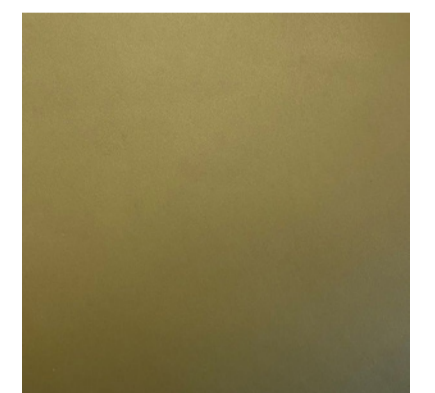
ME36 - GINGER
NAKED



ME37 - REINDEER
NAKED



ME38 - BUCKTAN
NAKED



ME40 - OLIVE